

ISH-SC Shore Durometer

User's Manual

Function:

ISH-SC shore durometer is an instrument for measuring foam ,sponge, mipor rubber and other low hardness material .It carries out standard of HG/T2439-93, this durometer apply to 50% of compressibility ,adopt together with rubber when the pressure is above 0.049Mpa, and measure the hardness of shoes mipor rubber which the epispastic preparation include in the plastic.

Specification:

Tip stroke: 0-2.5 mm

Dial Value: 0-100 HW

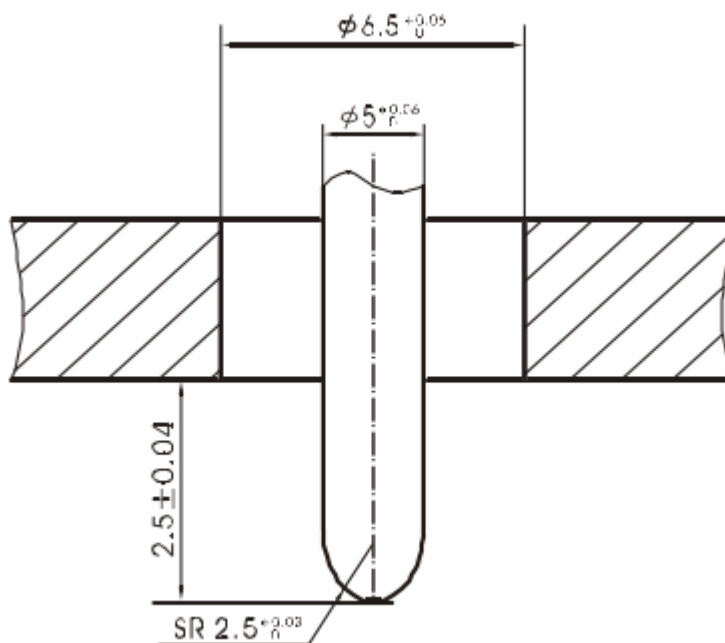
Available test range: 10-90 HW

Test error: 10---90HW. error is ± 1 HW

Tip dimension: SR2.5mm

Dimension: 115x60x25(mm)

Net weight: 0.5kg



ISH-SC tip dimension(HG/T2489 — 93)

Operation:

1 .Put the sample on the stable platform, hold the shore durometer, the tips' distance to sample's edge at least 15mm, press pressure feet on the sample, without any vibrancy keep

pressure feet parallel to make the pressure feet and sample contact closely ,unless other rule ,must read the value 1 second after pressure feet and sample contact closely. If the value is other interval time must instruct .For one test, please test hardness 3 times with the different position which distance is 15mm and then choose average value.

For Operation:

(1)Before test, please check the needle is point to zero .If the needle is not in zero, please loose the screw on up-right ,and turn around the dial make the needle to zero. Press the meter on glass board, the needle mast in $100 \pm 1HW$, if the needle not point to $100 \pm 1HW$,please Press the tip slightly for many times .If the needle can not point to $100 \pm 1 HW$, the durometer can not use. If apply it on the durometer test stand, move the handle ,make the working table up to lift the weight, make tip surface and feet surface touch to the working table closely ,the needle should point to $100 \pm 1HW$. If not in $100 \pm 1HW$, adjust screw on the working table -after adjusting the needle still not to $100 \pm 1HW$, it is better to send it to factory to calibrate.

(2)Rubber test and requirement to test temperature

a. Thickness of the rubber is $10 \pm 1mm$, the area of sample must be more than $15 \times 60mm$. If the thickness is less than 10mm, please use multilayer sample congruence, but the layer is not more than two. The rubber must touch totally (but the measured result is not the same as standard sample)

(3)The surface of the sample must be smooth, no defect.

(4)After applying the durometer 35000 times, in every apply 10000 times, it is better to check spring pressure and index scale relation and shape size of tips accordance to regulation of GB531.

(5)After test sample, please place the durometer into box, put it in the dry environment.

(6)Please brush clean the up-down shaft and the base of working table, spread little against--rust oil, prevent rusting

(7)When apply the shore durometer, its available test range is 10HW-90HW, if it is above this range, suggest you to apply other measurement method.